

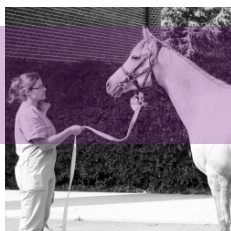


# The National Veterinary School of Alfort



Higher Education and research institution  
governed by the Ministry of Agriculture and Food

## OUR HISTORY TO BUILD THE FUTURE



**EnvA**  
École nationale vétérinaire d'Alfort



# Welcome!

4

A HISTORIC INSTITUTION  
figures and history

6

THE ENVA IS CHANGING  
projects and works

8

DEMANDING EDUCATIONAL PROGRAM  
foundation and professional

10

OUR MISSION: TREATMENT  
our clinics

12

RESEARCH & UNDERSTANDING  
our laboratories

14

A LIVING HERITAGE  
museum, library and events

16

STUDENT LIFE  
associations et initiatives

18

HELP US  
donations, sponsoring and the friends  
and alumni association

20

ORGANISATION  
our committees

22

MAPS  
how to get here and get about the site



**Pr Christophe  
DEGUEURCE**  
Dean of the  
National Veterinary  
School of Alfort

250 years! The National Veterinary School of Alfort is an institution with a historic name. This establishment has its own particular spirit and culture which is felt immediately by all who enter it, it is a place where the highest values of knowledge, work and solidarity are brought to life.

Our lively and bustling campus has 800 students, 60% of which reside within the walls, 140 educational staff including 80 university lecturers and 20 researchers, more than 35,000 domestic animal consultations per year and 10,000 visitors to the Fragonard Museum. Over the ten hectare site we train future veterinarians, confront the challenges of animal health and raise awareness our history and heritage.

We are very proud of our heritage as we prepare for a period of profound changes which will take us forwards into the 21<sup>st</sup> century. For the past 15 years educational methods have been pushing towards the cutting edge, new infrastructures have been raised and major projects have been initiated. More than ever, the EnvA is a major scientific institute with both a national and an international reputation.

I sincerely hope you will enjoy discovering what our school has to offer you!



# A historic institution

**Over 250 years! The National Veterinary School of Alfort was founded in 1766 and has become a veritable institution, a city-centre campus rich in history and heritage!**

The National Veterinary School of Alfort (EnvA) is one of the 12 National Higher Education Institutions specialized in agronomics, veterinary medicine and forestry, administrated by the ministry of Agriculture and Food and is a member of the Agreenium network, the French agronomics, veterinary medicine and forestry institute. Founded in 1766 by Claude Bourgelat, who pioneered the institutionalisation of veterinary medicine training, under the auspices of French King Louis XV<sup>th</sup>, the School still occupies the same original city-centre

site in Maisons-Alfort. It is completed by two further sites, the Equine locomotor conditions imaging and research centre (Cirale) in Goustranville, Normandy, and the Champignelles application centre for livestock, in the Yonne department. The missions of the School and foundation of its reputation are: education, fundamental applied and clinical research, sanitary issues, international cooperation in our fields of study, scientific information and the promotion of its extraordinary heritage.

in figures



**800**

students in five academic years, 32 interns and 30 overseas students



**140**

teaching staff: 80 lecturers  
20 researchers and 35 resident hospital practitioners



**10**

hectares, the surface area of the Alfort site, shared with Anses, on the periphery of Paris



**3**

sites: the School in Maisons-Alfort, the application centre in Champignelles and the Cirale in Goustranville

## ACROSS THE CENTURIES

The EnvA has journeyed through history, surviving revolutions and political change. It has developed progressively over the ten hectares that originally made up the estate of the *Château of Alfort*.

**1975**

The school opens its application centre for livestock animals in the Champignelles estate in the Yonne department.

**1999**



The centre for equine locomotor condition imaging and research is built at Goustranville in the Calvados department.

**2008**

The Fragonard museum was renovated with the conservation of its original façades, a new hospital unit for domestic animals is opened. The Camille Guérin building, dedicated to biological analyses, sees the day in 2015. And now? (pages 6-7)

**1945**

The increasing number of domestic animals in the Greater Paris region after the Second World War increases the demand for treatment of these animals in the Alfort clinics at the end of the 20th century.

**1881**

At the end of the 19th century, the Alfortiens work in close collaboration with Louis Pasteur. In 1881 they participated in the Pouilly-le-Fort demonstration where around fifty cattle were vaccinated against anthrax.



**1824**  
**1<sup>st</sup> journal**

Published by the teaching staff, "Le Recueil" [about veterinary medicine] became a reference on the subject. It ceased to be published in 2000.

**1900**



Napoleon reorganised veterinary training to meet the needs of his Empire. The leading Marshal-Veterinarians came to Alfort for a year to qualify as Doctor-Veterinarians.

**1813**

## Origines

French King Louis XV<sup>th</sup> commissions Claude Bourgelat, founder of the *Ecole Royale Vétérinaire de Lyon* 1761, with the mission to direct a school dedicated to teaching treatment practices for all types of animal in Paris. The first students arrived at the start of October 1766.

**1766**



**1783**

Between 1783 and 1785, a number of reputed figures were recruited to the teaching staff: Félix Vicq d'Azyr, the well-known anatomist, Antoine Fourcroy, the eminent chemist and Jean-Marie Daubenton, co-author of the Buffon General and Specific Natural History.



# The School is changing

**A metamorphosis! For the last 15 years, the School has been going through a process of complete modernisation to stay on the cutting edge of its field. Certain renovation projects have already been completed but restructuring continues.**

A time of extraordinary change. The EnvA is going through a very important phase of its history. For over twenty years now, it has been engaged in a process of thorough transformation which will allow it to propose better working conditions for its students, teaching staff, researchers, support staff, visitors and partners.

Started in 1999 with the opening of the Equine Locomotor Conditions Imaging and Research Center (Cirale) in Goustranville in the Calvados region, this work has continued with the

construction of a biomedical research center, opened in 2008, followed by a huge hospital for domestic animals. In 2015, the biological and pharmaceutical science related activities of the Alfort site was grouped together in the new *Camille Guérin* building.

The spectacular scope of this program continues (with the support of the ministry and Ile-de-France Region). The major axes:

-to open a modern educational centre specialised in treating livestock.

The *Nocard* Building, currently under construction, will be the first clinic of this type to be constructed in France since 1977; -to organise muscular and locomotor physio-pathological research in a single building, which will include both experimental platforms and laboratories. The *Chauveau* building will be constructed in response to the consolidation of the isolated infectious diseases platform with the current Bio-medical Research Platform.

-the entirely renovated *Bouley* building will receive all of the clinicians and staff of the Carnivore and Equidae Breeding and Pathology Department;



The Bouley building during the works.

-to create a genuine educational centre with two amphitheatres, with 200 seats and a number of modern multi-purpose classrooms. This "Agora" will be located right in the heart of the campus and will also house the administrative services;

-to continue the renovation of the School's architectural heritage with the renovation of the Fragonard and prestige Amphitheatres, the library and its reading rooms, archives, two new class-rooms and increased accessibility.

These works will be completed in 2022.



The Nocard Building under renovation and construction.

## OUR OTHER PROJECTS

- 2023: The equine clinic is moving, from the Maisons-Alfort site to the site of the Cirale - in the Normandy Equine Valley in Goustranville. Objective: create a campus in Normandy dedicated to treating horses, with the construction of a hospital, student lodgings and a space for entrepreneurs.
- From the start of the Academic year in September 2020, the activities of the Champignelles site will be based at the Maisons-Alfort site.
- The headquarters of the National Forestry Office will come to the Maisons-Alfort site in 2021 offering new partnership perspectives.





# Demanding educational standards!

**Each year the EnvA receives 800 successful students via the national entrance exam program. Professional training has been one of our leading missions for 250 years.**

The National Veterinary School of Alfort proposes a widely recognised education program built on excellence. Accredited by the “European Association of Establishments for Veterinary Education” (EAEVE), which is proof that its standing is not only national but international. Not forgetting its inclusion in the 2017, 2018 and 2019 Shanghai Ranking.

It awards the Veterinarian qualification after seven years of theoretical and clinical education: two years before the entrance exam, four years of core curriculum and one year of specialisation. After the fifth year, the students must complete a thesis to become fully qualified. This will qualify them to practise in any member state of the European Union. During the initial years of studies, the program includes external practical training. And each student must complete a part of their studies in a

foreign country.

The clinical side of the alfort campus education program is built on clinical training in the domestic animals, farm animals and horses clinics, visits to livestock farms and the soon to be completed Nocard clinic.

## A RESEARCH CAREER

After completing their first four years of core curriculum, the student can access second year Master's degree studies and prepare a PhD.

The campus has a large number of research units, partnerships and close relations with other research institutions in Paris and its surroundings, thus ensuring an ideal environment for post-graduate studies at the campus.

## ENTERING THE SCHOOL

An entrance exam, after at least two

years of studies beyond the ‘baccalaureat’ (GCE A levels), common to the four French National Veterinary Schools (Alfort, Lyon, Nantes and Toulouse) provides access to one of them. The large majority of the students have ‘science baccalaureats’. Six different recruitment paths are possible depending on the student's background.

## FIND OUT MORE

**Agronomics and Veterinary Medicine Entrance Exams service**

[concours-agro-veto.net](http://concours-agro-veto.net)

[contact@concours-agro-veto.net](mailto:contact@concours-agro-veto.net)

01 44 08 16 29

## INNOVATIVE EDUCATIONAL METHODS

The VetSims platform, whose motto is “Never on a live animal for the first time”, allows students to practice technical procedures (placing a catheter, blood tests, etc.) on inert material, or simulate consultations with actors. An on-line training platform provides them with complete educational materials as well as self-assessment and skill development monitoring tools. Objective: training tomorrow's best professionals.

*Vetsims, «never the first time on a living animal»*



# AFTER COMPLETING

## PROFESSIONAL EDUCATION

- > 700 trainees / year
- > 15 qualification courses
- > 50 other courses

The EnvA is certified by the National Veterinary Council for Professional and Complementary Education (CNVFCC) and proposes educational programs adapted to suit the needs of professionals throughout their careers. Each training program is managed by one of the School's Professors who serves as educational manager for that program.

Three types of program: qualification without diploma, with diploma and flexible.

## FIND OUT MORE

[alforpro.vet-alfort.fr](http://alforpro.vet-alfort.fr)

[formationcontinue@vet-alfort.fr](mailto:formationcontinue@vet-alfort.fr)

01 43 96 70 38

## INTERNSHIPS AND RESIDENCIES

> 32 interns trained / year

Internships are reserved for holders of a recognised veterinarian diploma (DVM). Admissions are subject to a national entrance exam procedure organised by the four national veterinary schools. This involves one year of full-time intern practise in either the domestic animals clinic, the equidae clinic or the farm animal clinic.

## FIND OUT MORE

[vet-alfort.fr/formation](http://vet-alfort.fr/formation)



# Our mission: treatment

**The Alfort University Veterinary Hospital receives thousands of animals, providing them with the expert care of our professionals whilst also allowing our students to learn.**

The Alfort site's four clinics! Domestic animals, horses, livestock (cows, sheep, etc.) and wild animals can receive treatment in our units. This exceptional environment has been designed to ensure that students and interns get the best possible training in real and practical situations. Educational programs applied in a hospital context. Students of different years are supervised by professors and medical staff throughout each intervention and during all animal

contact. These teaching methods therefore place the students in real-life conditions where they will practice their future professions and be confronted by genuine clinical cases and discover how to relate to the owners of the animals in question. Each year, the Alfort site receives 35,000 domestic animals, 400 livestock animals and 500 equine consultations. A further 1,000 horses are treated by the Cirale in Normandy for equine locomotor conditions.

## DOMESTIC ANIMALS

Dogs, cats and other domestic animals.  
General and specialist consultations by appointment.  
Hospitalisation and operating theatre.  
Emergencies and intensive care 24/7  
At Maisons-Alfort:  
01 43 96 73 73  
Emergencies 24/7:  
01 43 96 72 72

## HORSES

Diagnostic, treatment and hospitalisation services  
• ALFORT  
Monday to Friday  
Appointments: 8:30am to 5pm  
01 43 96 70 39  
Emergencies 24h: 06 07 51 31 24  
web-equine@vet-alfort.fr  
• CIRALE, NORMANDY EQUINE TREATMENT CENTRE  
Consultations by referral only  
Info: 02 31 27 85 56

## LIVE-STOCK

Livestock consultations for privately or commercially owned animals (cattle, sheep, goats, pigs), referred by their regular veterinary.  
By appointment only, Monday to Friday,  
9am to 5pm  
web-pathologie-betail@vet-alfort.fr - 01 43 96 71 23



## WILD ANIMALS

The EnvA wildlife treatment centre (Cedaf), is both a treatment and a training centre. It was founded in 1993 and works in association with the Faune Alfort association to finance its actions and mobilise a large number of dedicated volunteers. or the southern or

eastern regions of the Greater Paris Area (Ile-de-France). Almost a hundred different species are admitted each year. Bring animals 24/7 to 7, av. du Gal de Gaulle, Maisons-Alfort. Keep them in a warm and calm room.  
**+ info : vet-alfort.fr**



**6 000**  
**ANIMALS ADMITTED IN 2018**  
85% birds  
15% mammals

in figures



**200**

staff making up the ChuvA staff (60 practitioners, 45 technical and administrative staff, 100 students and interns)



**500**

dedicated equidae consultations at the Alfort site each year. Almost one thousand at the Cirale, in Normandy



**35 000**

domestic animal consultations per year



**400**

livestock animals hospitalised at the Alfort site each year and 1,500 interventions completed each year during on-site visits





# Research: on the cutting edge!

**With over a hundred professors and full-time researchers, the EnvA is on the cutting edge of understanding and treating animals as well as contributing to public health.**

Ever since it was founded in 1766, the EnvA has been committed to advancing scientific knowledge in biology and the conditions affecting animals in order to manage them better. Our current fields of action:

- **contain animal diseases:** the main causes are bacteria, parasites, fungi and pathogenic viruses. With global warming, the natural habitats of these vectors are spreading and their populations are increasing. Whilst at the same time we are witnessing the emergence of new pathogen agents

due to their ability to mutate either spontaneously or in response to the environment.

- **study animals in order to be able to better treat them and contribute to their well-being:** thanks to this research, many treatments can be proposed for chronic animal diseases, such as locomotor, neuromuscular or cardiac conditions.

- **maintain food safety, improve public health:** the EnvA is entirely committed to the "One world, one health!" concept, which is being increasingly

adopted throughout the world integrating an increasing number of scientific disciplines as it spreads. The unity of this concept is based on the principal that our health, that of animals and our environment are all intimately linked together and should be confronted as a whole.

## Biomedical research for sustainable understanding and treatment.

The scientific approach which prevails on our campus, and is passed on to our students by the EnvA teaching staff who are also researchers, guarantees the sustainability of cutting edge, disciplined, constantly renewed and increasingly preventive medical practices which will benefit future generations of animals and human patients.

## Dynamic research within the local higher education and research landscape.

The EnvA's location in the heart of the Ile-de-France region positions it as one of the essential Higher Education Agricultural Schools in terms of scientific publications. Its links with the University of Paris-Est-Créteil and the on-site presence of one of the National health & safety (Anses) offices and a number of combined research units brings together veterinarians, doctors, agronomists and biologists from all disciplines in partnerships with major research institutes: such as the INRA, INSERM, the Institut Pasteur, etc., to make a unique whole which contributes to the School's national and international profile.

## TWO RESEARCH CENTRES

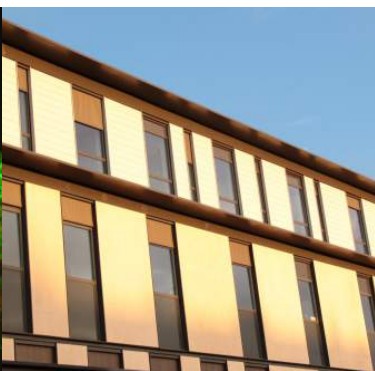
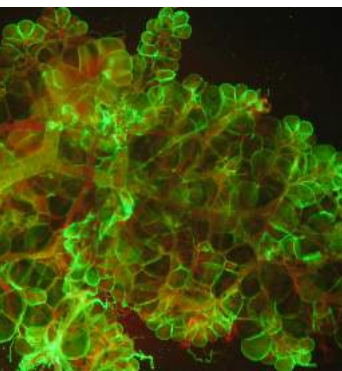
### ANIMAL DISEASES, ZOONOTIC CONDITIONS AND INFECTIOUS RISKS

- molecular biology and parasitic immunology
- virology
- host/pathogen interaction, therapeutic and medical veterinary mycology resistance dynamics
- epidemiology of infectious animal diseases

A biomedical research platform and an infectious diseases and vaccination platform will be added in the Chauveau building.

### PHYSIOPATHOLOGY AND MUSCULAR THERAPY OF THE LOCOMOTOR AND REPRODUCTIVE ORGANS

- bio-mechanics and equine locomotor pathology
- developmental and reproduction biology
- cardio-protection and pharmacology for coronary and heart conditions
- neuromuscular system biology
- osteo-articular bio-engineering and bio-imaging





# A Living Heritage!

**The Alfort site includes a museum, a library, botanic gardens and a large number of 19th century buildings. With events that bring the campus to life throughout the year.**

The EnvA's Maisons-Alfort site is a real treasure! But not only because of its students and research work. Behind the high walls and imposing gate, the site itself is charged with history and heritage. As you enter the Honour Amphitheatre, you will be dazzled by its style, fine wood-work and design. Many of the buildings date back to the 18th and 19th centuries and are listed historic monuments. This is certainly the case with the *Bouley* building, which includes the equine clinic amongst others and the *Fragonard* building with its

famous and very special anatomy amphitheatre. *Brion* gave it a new, very Art Deco, façade in 1927. The heritage of the National Veterinary School of Alfort's prestigious history is highly visible with its statues. These were a symbol of recognition and respect for their subjects and the work of one of Alfort's great scientists. Claude Bourgelat, Henri Bouley and Edmond Nocard, the founder and two of its early professors, are represented. You will discover surprising and dynamic points of interest over these ten hectares.

## THE FRAGONARD MUSEUM



Named after the famous anatomist Honoré Fragonard, who was also a cousin of the famous painter, this is a unique museum that is officially classed as a 'Musée de France'. Inside this cabinet of curiosities are displays of his famous 'écorchés', mummified animals and humans alongside everything else which has contributed to the progress of veterinary science: skeletons, animal illnesses, etc.

>>> Open to visitors on Wednesday, Thursday, Saturday and Sunday afternoons. From 2pm to 6pm. Entrance price: free for under 26 // normal price: €8. Info: [musee@vet-alfort.fr](mailto:musee@vet-alfort.fr) -01 43 96 71 72

## THE LIBRARY



This is really an exemplary library with its four metre high wooden shelves, rolling ladder platforms to reach the heights, study rooms and thousands of books. More than 30,000 works are listed in the index, including 7,000 from the depositories of the revolution dating back to before 1815. 200 of these are genuinely rare items.

>>> Open from September to the end of July, Monday to Thursday, 9am to 6pm and Fridays 9am to 5:30pm. Info: [web-bibliotheque@vet-alfort.fr](mailto:web-bibliotheque@vet-alfort.fr) -01 43 96 71 85

## THE BOTANIC GARDENS



The botanic gardens were first constructed in 1766. Its reputation is built on its collection of nectar source (used to make honey), toxic and medicinal plants of great scientific and heritage value.

>>> Visits from March to November. Info: [jbotanique@vet-alfort.fr](mailto:jbotanique@vet-alfort.fr)

## OUR EVENTS



European heritage days in September every year



The Animal as monument exhibition every year



The first artist's residence with the poet Jean-Louis Giovannoni



The "causeries alforiennes" (Alfortien debates): themed conferences



Film shoots: left 'Le bal des casse-pieds', with Jean Rochefort, in 1992. right, Juliette Binoche in the Unbearable Lightness of Being, in 1987.

in figures



**10 000**

visitors to the Fragonard museum each year



**2<sup>nd</sup>**

most visited site of the Val-de-Marne department for the European heritage days



**7 000**

books published before 1815, including 200 that are very rare. The library contains 30,000 works.



**3**

annual Animal as Monument exhibitions, dedicated to animal art, in the 'cour d'honneur'





# Student life

**Students are strongly committed to the community life of Alfort, through a number of associations and individual events.**

Students play an immense part of life at our School. With their reserves of energy they generate a genuine 'esprit de corps' which contributes to their success in their studies. Over five years each of them works, lives and socialises on the Alfort campus. Two major institutional events mark each academic year: the start of the academic year, full of ritual and mystery - where the "senior students", the 4th year, are each allocated a 1st year student that they must sponsor, referred to as a "poulot" - and the diploma award ceremony, a celebration

of achievement held each autumn. Students also mobilise themselves in the organisation of their own events: a gala, conferences, concerts, themed open weekends, etc. The Students Circle is active through its associations and clubs (music, theatre, photo and much more) and in relation with the Sports Office. They also manage the students club, the Grisby, and publish a monthly journal the "Gazette" which is an absolutely essential guide to life in Alfort. A junior-enterprise, Proveto Junior, is also run by the students. Our campus is full of life!

in figures



**30**

student associations  
and clubs



**500**

lodgings in  
our university  
residences



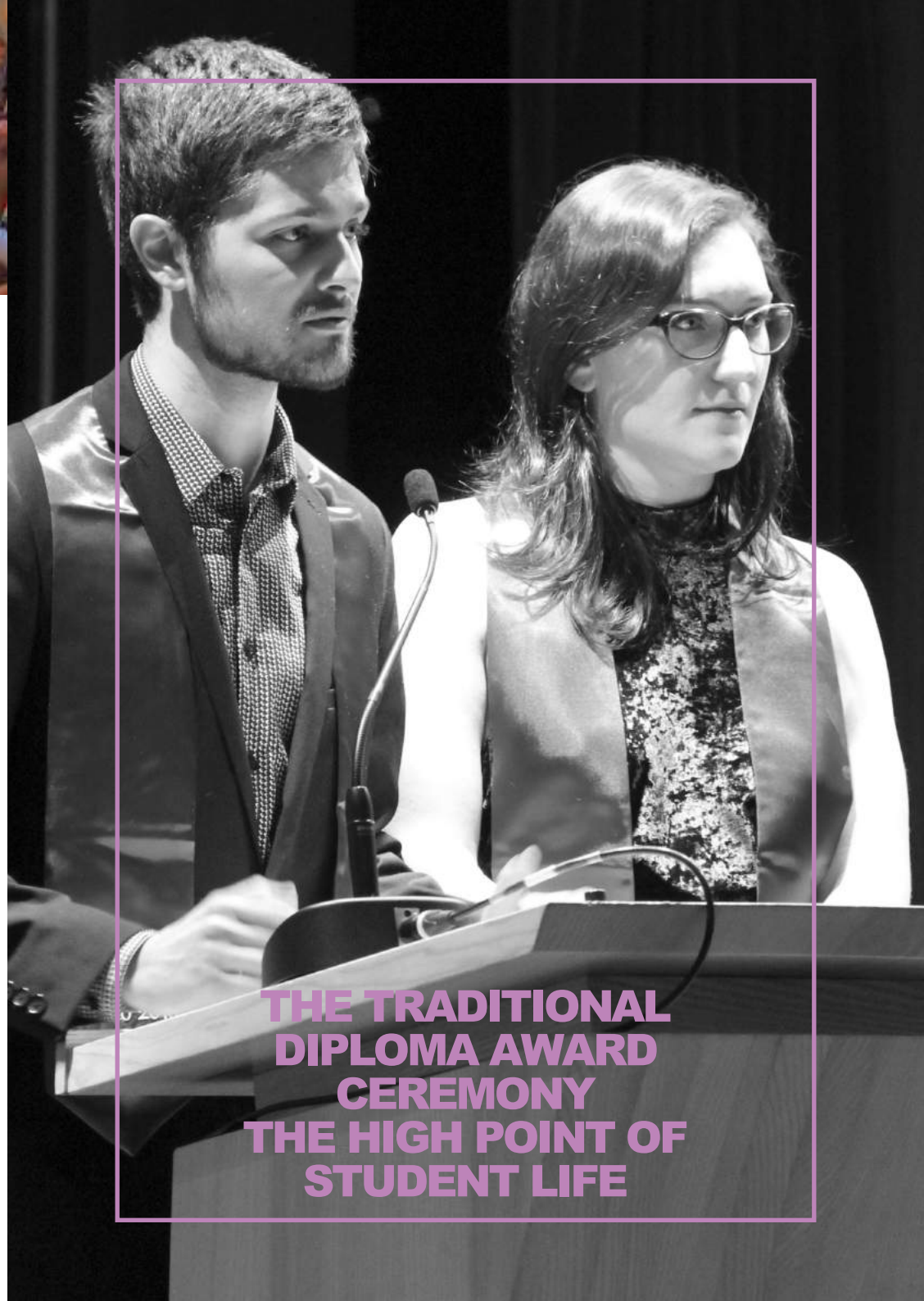
**60%**

students live on the  
Alfort campus



**6**

home of campus  
social life



**THE TRADITIONAL  
DIPLOMA AWARD  
CEREMONY  
THE HIGH POINT OF  
STUDENT LIFE**



# Support our work

**The EnvA organises events, renews itself, acts for animal well-being and undertakes ambitious research and educational programs. You can help us to do this!**

And if you were to become a partner of the School? The EnvA is able to function for the most part thanks to outside support. Individuals and businesses alike are invited to accompany its projects that concern educational, research or cultural activities. There are a number of ways to do this: donations, bequests, sponsoring or apprenticeship contributions.

## WHY GIVE?

- For over 250 years, the EnvA has been caring for animals, both great and small, in its clinics providing a proximity and public interest service.
- We train the veterinarian of tomorrow and hope to offer them the best possible learning environment.
- The true role of a veterinarian is to serve as a veritable intermediary between man and animal.
- The School is progressing into the 21st century with a major modernisation

program.

- Research programs help to protect animal and human health, and promote the combat against certain pathologies.

The School has a very precious heritage, a testimony to how our relationship with animals has evolved over history. We must fight to preserve this!

## MAKE A DONATION

If you would like to support the Alfort School and its projects, you can make a donation.

Donations by cheque can be made out to "l'Ecole nationale vétérinaire d'Alfort". Endowments are also possible. Once rendered legally official by your notary, they are irrevocable, take immediate effect and can concern items of property or real estate (a secondary residence, a work of art, a share-holding, etc.).

## The financial advantages:

66% of your donation is tax deductible.

75 % of your donation

is deductible from your property tax (IFI).

## BEQUESTS

Add meaning to your patrimony by bequeathing it to the School.

A bequest allows you to will your assets to one or a number of benefactors after your death. You can bequeath all or part of your assets: a financial sum, property, share-holding, etc.

## The financial advantages:

Your bequest to the EnvA will not be subject to inheritance tax.

## SPONSORSHIP

This involves making a contribution in the form of a donation (in currency, in kind or as services) to an organism to support a public interest work.

## The financial advantages:

66% is tax deductible for private individuals. 60% for businesses.

## APPRENTICESHIP TAX

Businesses can support the School by attributing a part of their apprenticeship tax (ex quota B).

## FIND OUT MORE

**Communications department:**

[communication@vet-alfort.fr](mailto:communication@vet-alfort.fr)

Tel : 01 43 96 72 38

**Direction :**

[direction@vet-alfort.fr](mailto:direction@vet-alfort.fr)

Tel : 01 43 96 72 03



*Make a donation for the restoration of the 'Fables de La Fontaine' illustrated by J-B. Oudry, the anatomy amphitheatre or to finance simulated animal care (VetSims) or our other projects*



## ALUMNI



125 years of the Alfort School Friends and Alumni Association! It is officially recognised as a public interest association, it provides support for students with difficulties through grants and scholarships and participates actively in the conservation of the EnvA's heritage.

## FIND OUT MORE

[anciens-eleves@vet-alfort.fr](mailto:anciens-eleves@vet-alfort.fr) • [vet-alfort.fr/aaeaea](http://vet-alfort.fr/aaeaea)





# Organisation & committees

**The EnvA's activities are subject to the regulations laid out by the (French) Countryside and Fisheries Code and its Interior Regulations. Various councils and committees exist allowing the whole of the School's community to participate actively in its operations.**

## THE GOVERNING BOARD

36 members either elected from amongst professors, non-teaching staff and students or nominated in the case of State representatives and qualified personalities. Its main mission is to debate and decide on the establishment's project and its contract with the State, its educational and research policies, the budget and the establishment's interior regulations. On average it meets three times during the academic year.

## THE SCIENTIFIC COMMITTEE

20 members, including a certain number elected from amongst staff and students and others nominated by the board of directors. Its role is to make strategic research orientation propositions.

## THE TEACHING STAFF COMMITTEE

40 members, elected representatives from amongst the professors. Its main role is to steer the School's veterinary curriculum.

## THE EDUCATIONAL AND STUDENT LIFE COMMITTEE

20 members elected from amongst teaching staff, non-teaching staff and students. The board of directors nominates two qualified individuals to complete the composition of the committee. The committee's role is to make propositions concerning subjects related to student life, teaching programs and exams.

## THE DEPARTMENT COMMITTEES

Made up of elected representatives from amongst the department staff and students. Their role is to assist the department heads to define projects and initiatives for the conception, organisation and implementation of teaching actions for the fields of specialisation of their department (including exams).

## THE ETHICS COMMITTEES

The School has an ethics committee for the use of animals for scientific purposes which operates in partnership with the ANSES and the Paris-Est Créteil University (UPEC). This is made up of research staff, veterinarians and technical staff involved in animal treatment. Its role is to authorise and supervise all programs that use animals for scientific purposes. The School also has a specific clinical

research ethics committee, which combines researchers, professors and clinical practitioners for the evaluation of research projects which aim to improve veterinary medicine practices in hospital environments.

## THE BIO-SECURITY COMMITTEE

Ensures that biosecurity regulations are applied in all of the EnvA's sectors of activity exposed to biological risks.

## QUALITY CONTROL COMMITTEE

Promotes the EnvA's quality control approach with a continuous improvement objective.

## ORGANIGRAM



## FIND OUT MORE

**Reception:**  
01 43 96 71 00

**Direction :**  
direction@vet-alfort.fr  
01 43 96 72 03

**The communications department:**  
communication@vet-alfort.fr  
01 43 96 72 38



**3**

consultation committees  
administration  
support the governing  
board



**3**

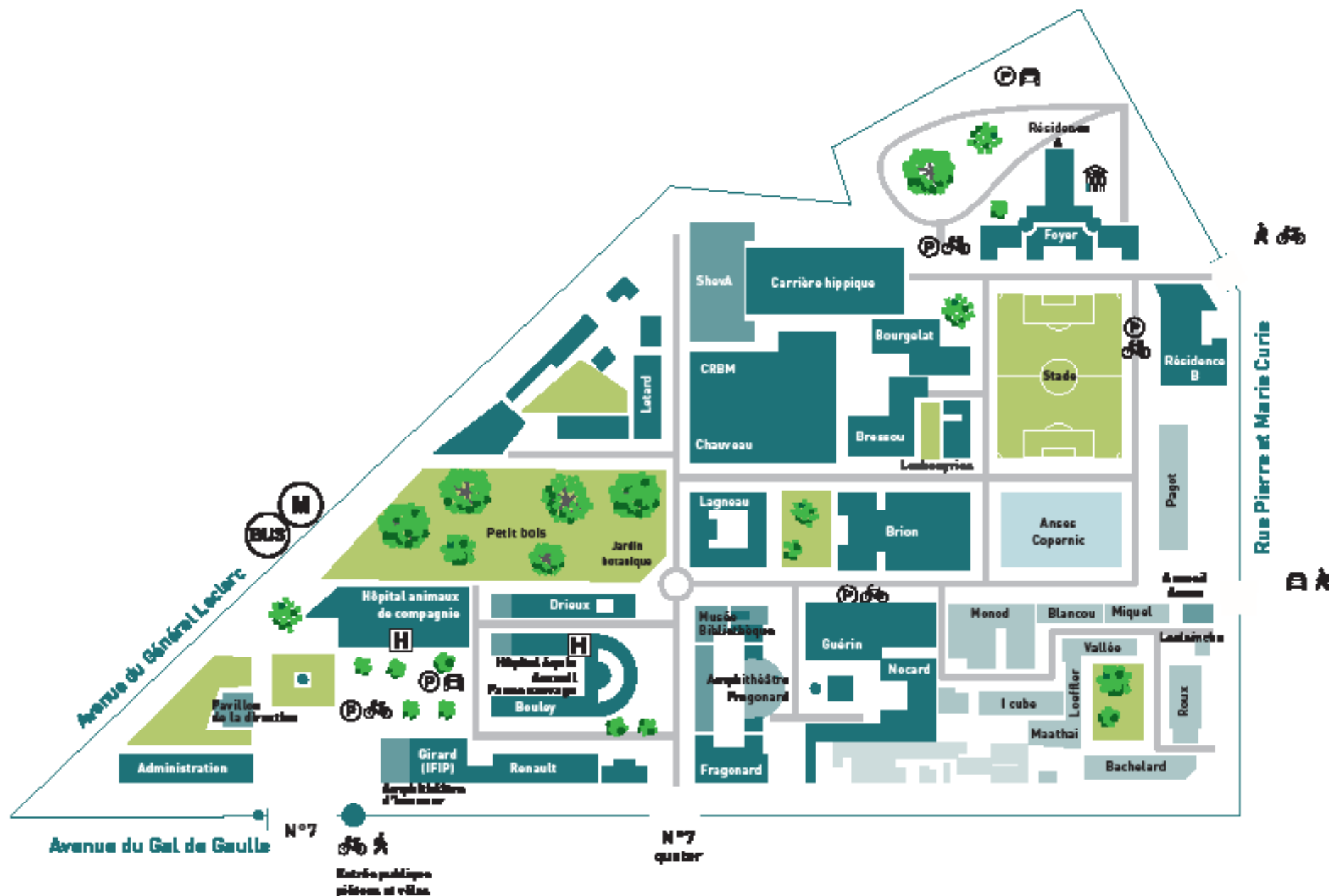
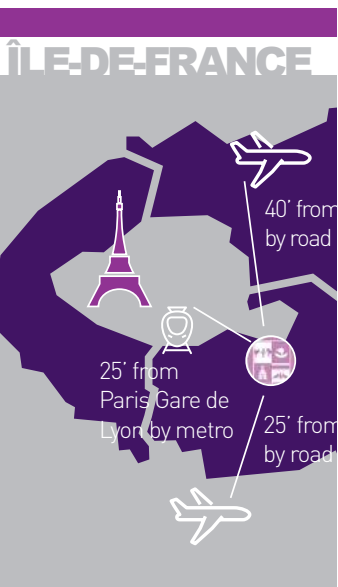
governing board  
meetings each  
academic year






# Getting

How to get here  
airport? All of it  
with a map of the




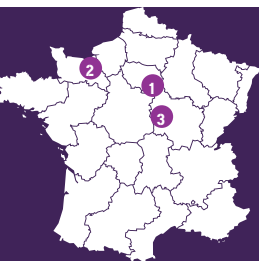
7, AVENUE DU GÉNÉRAL DE GAULLE  
94 700 MAISONS-ALFORT  
01 43 96 71 00

  
Metro: Line 8 (Balard-Créteil)  
station: École vétérinaire  
RER D: M-Alfort / Alfortville station

  
Bus-stop: École vétérinaire -  
lines 24, 78, 103, 104, 107,  
125, 181, 325

  
A4 motor-way  
A Road (RN) 19 & 6  
No public car-park on-site

  
On-site cycle-  
parking.



# The three EnvA sites

- 1 MAIN CAMPUS**  
7, avenue du général de Gaulle  
94 700 Maisons-Alfort  
01 43 96 71 00
- 2 EQUINE LOCOMOTOR CONDITION  
IMAGING AND RESEARCH CENTRE  
(CIRALE)**  
Normandy Equine Valley  
RD 675 14430 Goustranville  
02 31 27 85 56
- 3 LIVESTOCK PRODUCTION  
APPLICATION CENTRE**  
89 350 Champignelles  
03 86 45 10 22



## EnvA

École nationale vétérinaire d'Alfort

7, avenue du Général de Gaulle  
94 700 Maisons-Alfort  
01 43 96 71 00



UNIVERSITÉ  
— PARIS-EST

## ALL OUR LATEST NEWS



[vet-alfort.fr](http://vet-alfort.fr)



École nationale vétérinaire d'Alfort



@Env\_Alfort